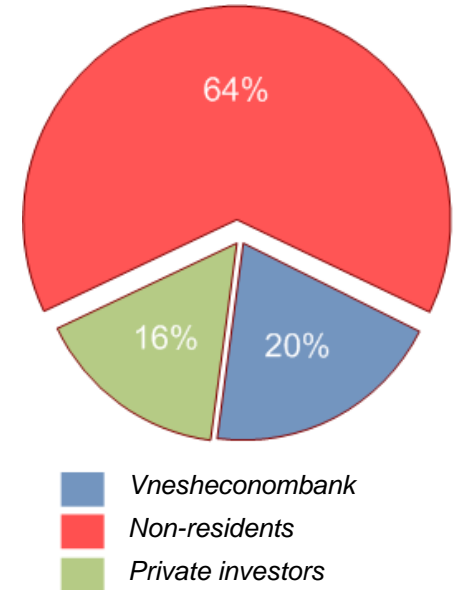


Эффективные экологические решения в инфраструктуре

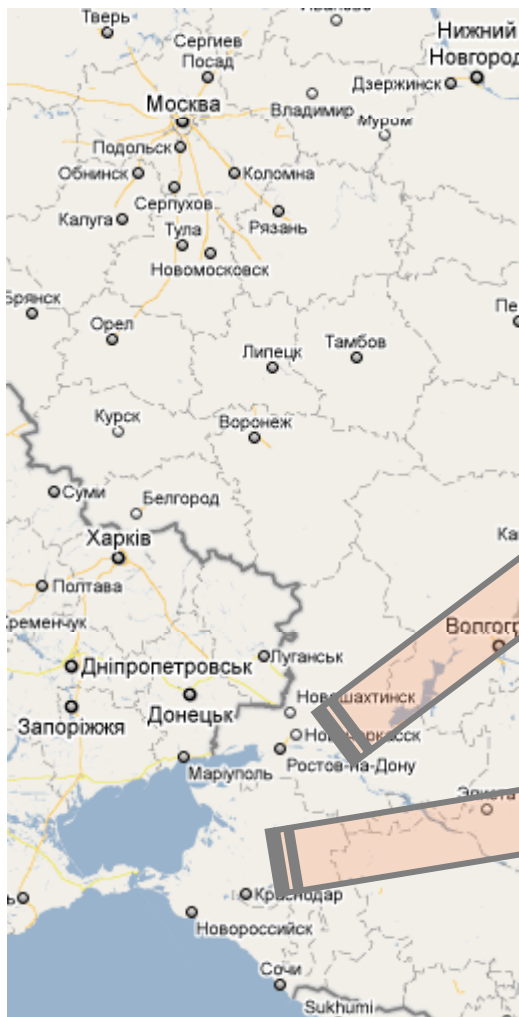
Сотрудничество России и Франции
в проекте «Чистый Дон»

ПУЗАНОВ Дмитрий Владимирович
*Заместитель Генерального
директора*

Profile	Figures
Year of foundation	1994
Registered share capital	RUR 4 bln
Consolidated turnover, group of companies 2009 (group of companies, 2010), forecast	€ 236 mln .(9 839 mln.RUR) € 288 mln .(12 005 mln. RUR)
Number of employees total	8,5 thousand persons
The company's investment portfolio in infrastructure projects for the next 15 years	€ 960 mln. (40 022 mln. RUR)
CEO – Sergey V. Yashechkin	



- Evraziysky's employees worked for a number of international companies, such as: DHV (Netherlands), Lamayer International (Germany), CH2M Hill (USA)
- The company's employees have good career experience in Russia's largest companies: Rosenergoatom, RAO UES of Russia, Capital Investment Fund, Russian Utility Systems (RKS) OJSC
- Top managers of the Company have good experience as top officials in public sector



Evraziysky JCS is one of the largest private companies working in the Russian utility sector. The core-business is to establish and to develop long-term contracts (lease, concession and other models involving investment obligations) in water and wastewater sectors:

- Water supply and wastewater Company, Rostov-on-Don and Rostov region, JCS PO Vodokanal, subsidiary
 - Turnover, year 2010 (forecast) € 90,3 mln. (3 763,8 mln. RUR)
 - Turnover, year 2009 € 73,6 mln. (3 068,4 mln. RUR)
 - Number of employees 2 131
 - Population covered 1 187 thousand pers.

- Water supply and wastewater Company, Krasnodar region, LLC Yugvodokanal, subsidiary
 - Turnover, year 2010 (forecast) € 82,1 mln (3 423,8 mln. RUR)
 - Turnover, year 2009 €52,8 mln (2 202,8 mln. RUR)
 - Number of employees 4 440
 - Population covered 2 925 thousand pers.

■ Rostov: Integrated development program

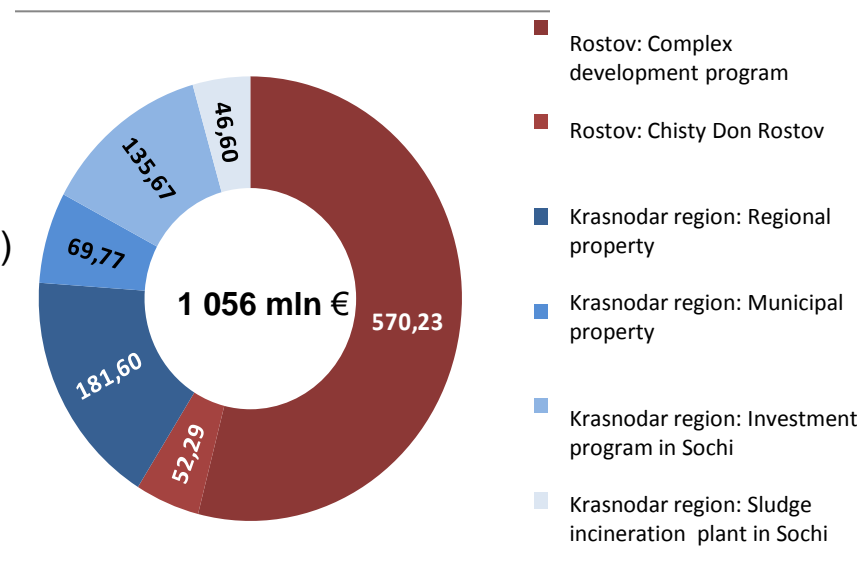
- Implementation period 2008 – 2021
- Investment amount €777,67 mln.
(32 421,06 mln. RUR)

■ Rostov: Chisty Don (Clean Don)

- Implementation period 2010 -2012
- Investment amount €103,79 mln.
(RUR 4 327,01 mln)

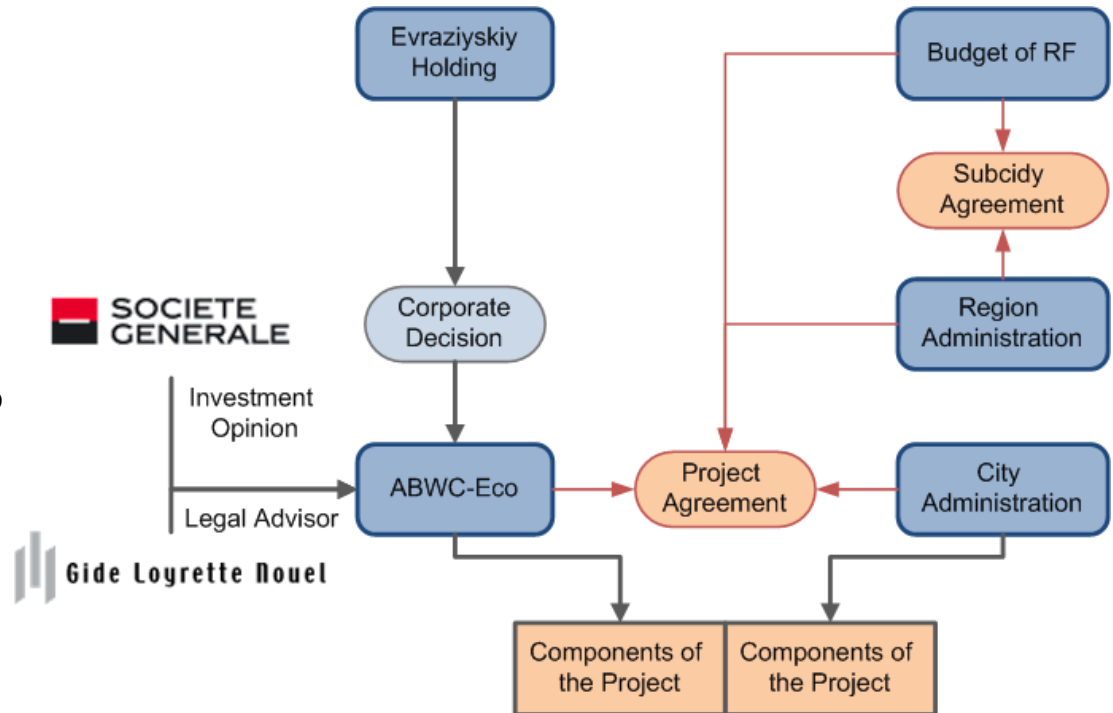
■ Krasnodar region

- Concession of regional property (30 years); investments as of €181,6 mln. (7 570,9 mln. RUR)
- Concession of municipal property (25 years); investments as of € 70 mln. (2 918,3 mln. RUR)
- Investment program in Sochi (10 years); investments as of €135 mln. (5 628,2 mln. RUR)
- Sludge incineration plant (15 years); investments as of €47 mln. (1 959,4 mln. RUR)



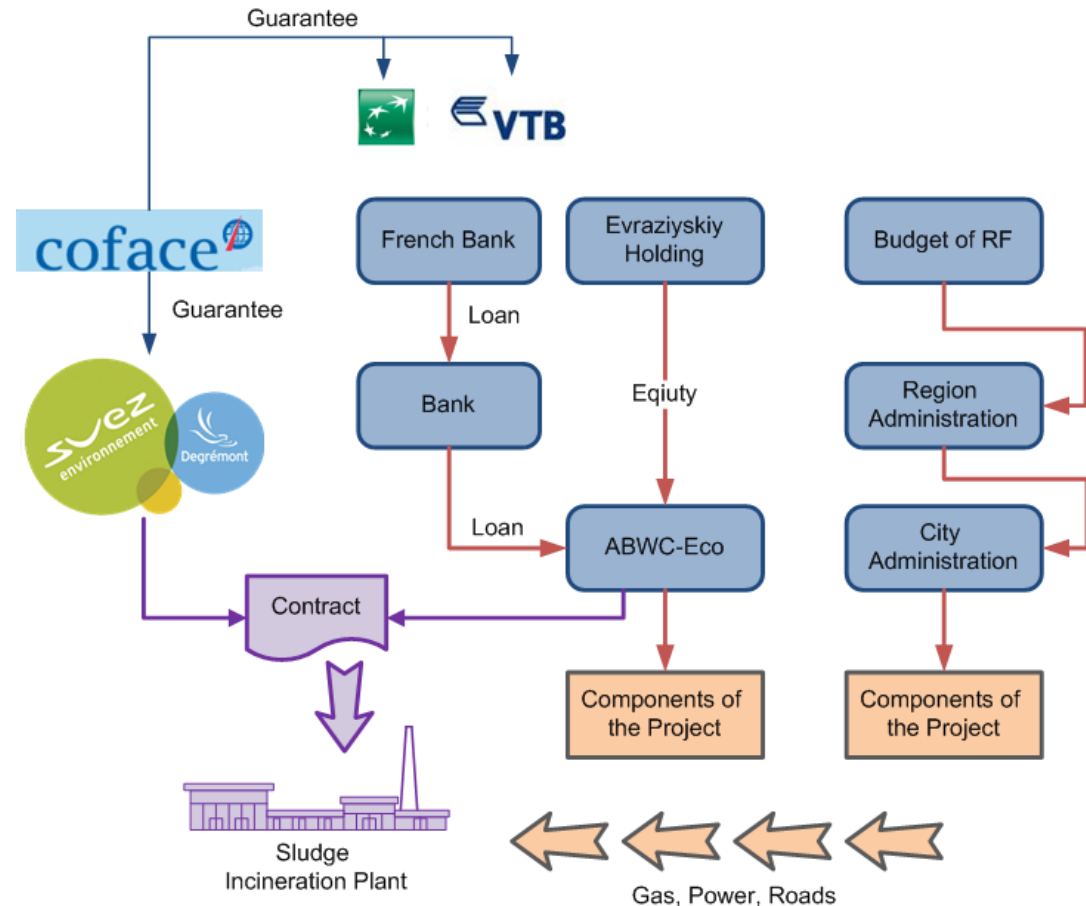
Public-Private Partnership

- Public Stakeholders
 - Investment Fund of the RF
 - Administration of Rostov Region
 - Administration of Rostov-on-Don
- Private Stakeholders
 - Special Purpose Vehicle - ABWC Eco
- Consultants
 - Investment Consultant
 - Legal Advisor



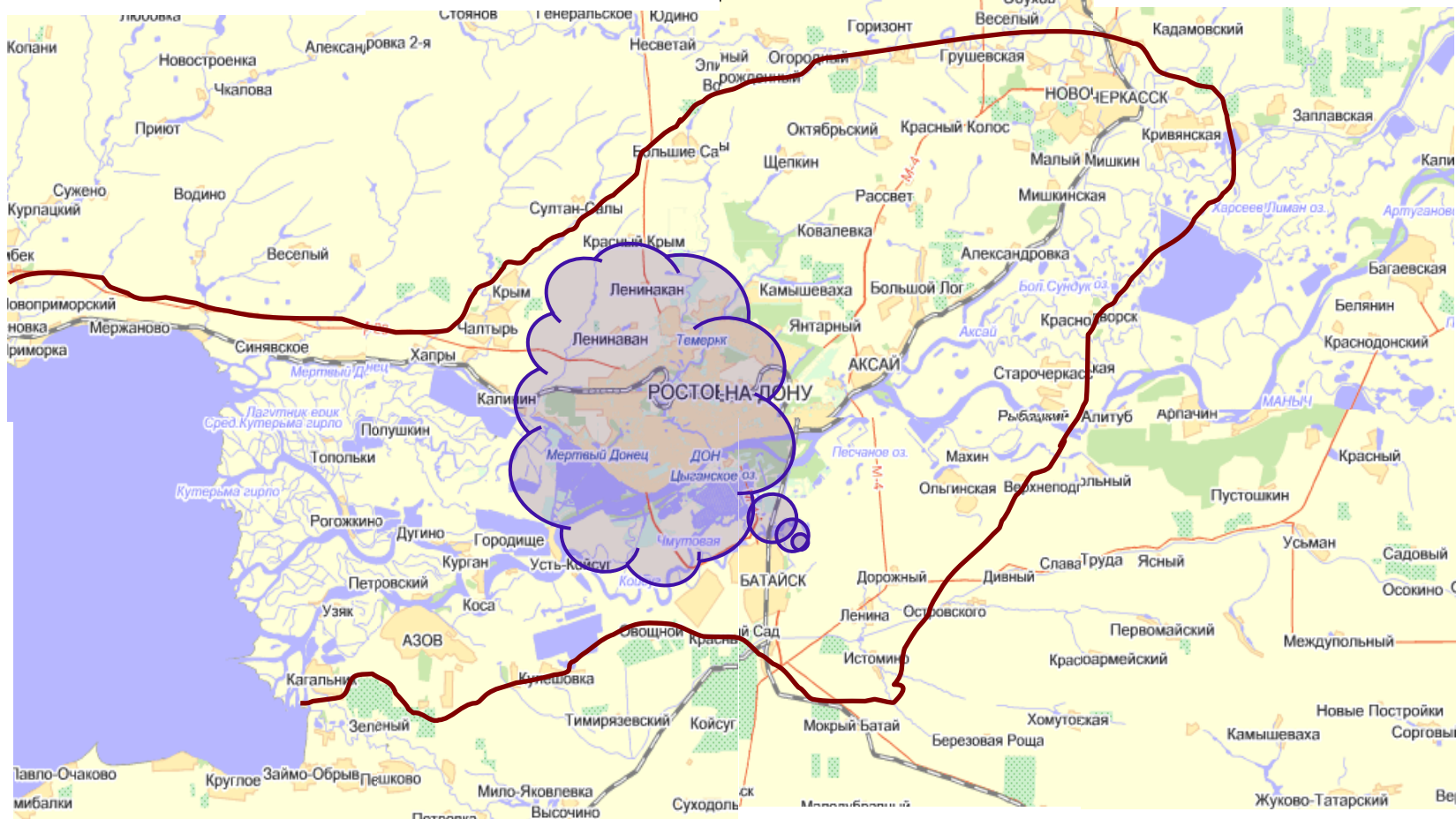
Contractual Scheme

- Tender to award the contract for turn-key construction of an incinerator:
 - International participants from 3 EU countries
 - FIDIC based contract
 - National export support agency support
- Bidders' proposal
 - Technical & Financial
 - Insurance
 - Security
 - Financing

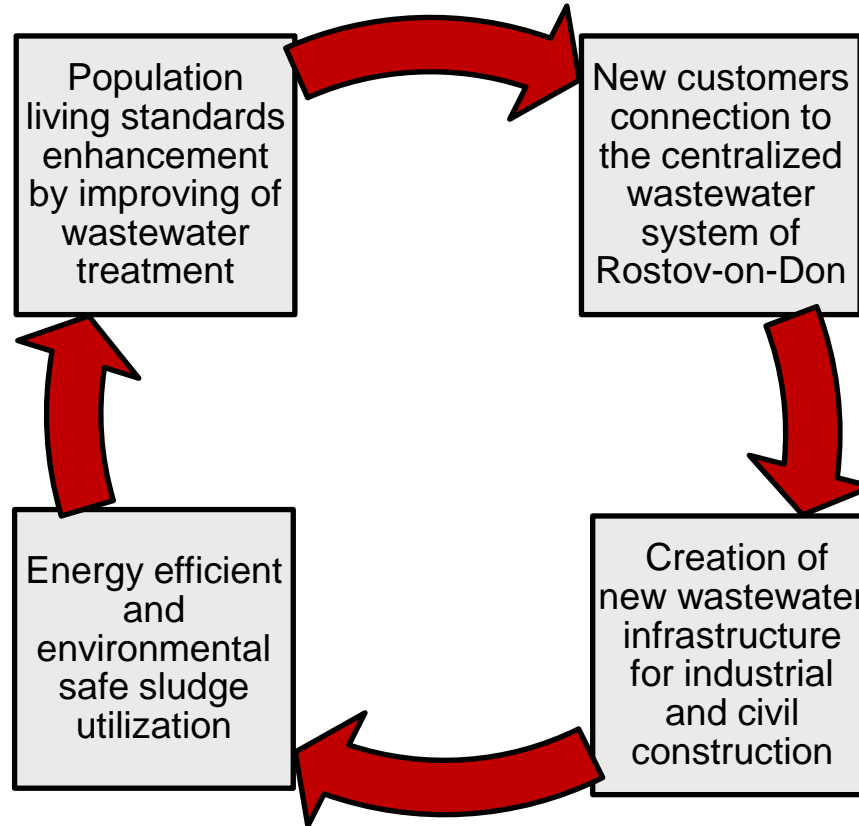




Implementation Area



Objectives



1. Social Efficiency

Indicator	Value
Employment increase	for construction period – 466 jobs for operation period – 24 jobs
Comfortable housing provision level increase for citizens	Wastewater services provision for 326 000 citizens
Increase of services availability and quality in housing and utilities sector	Increase of connection rate for centralized wastewater services from 85% to 90% by 2011

2. Budget and Economic Efficiency

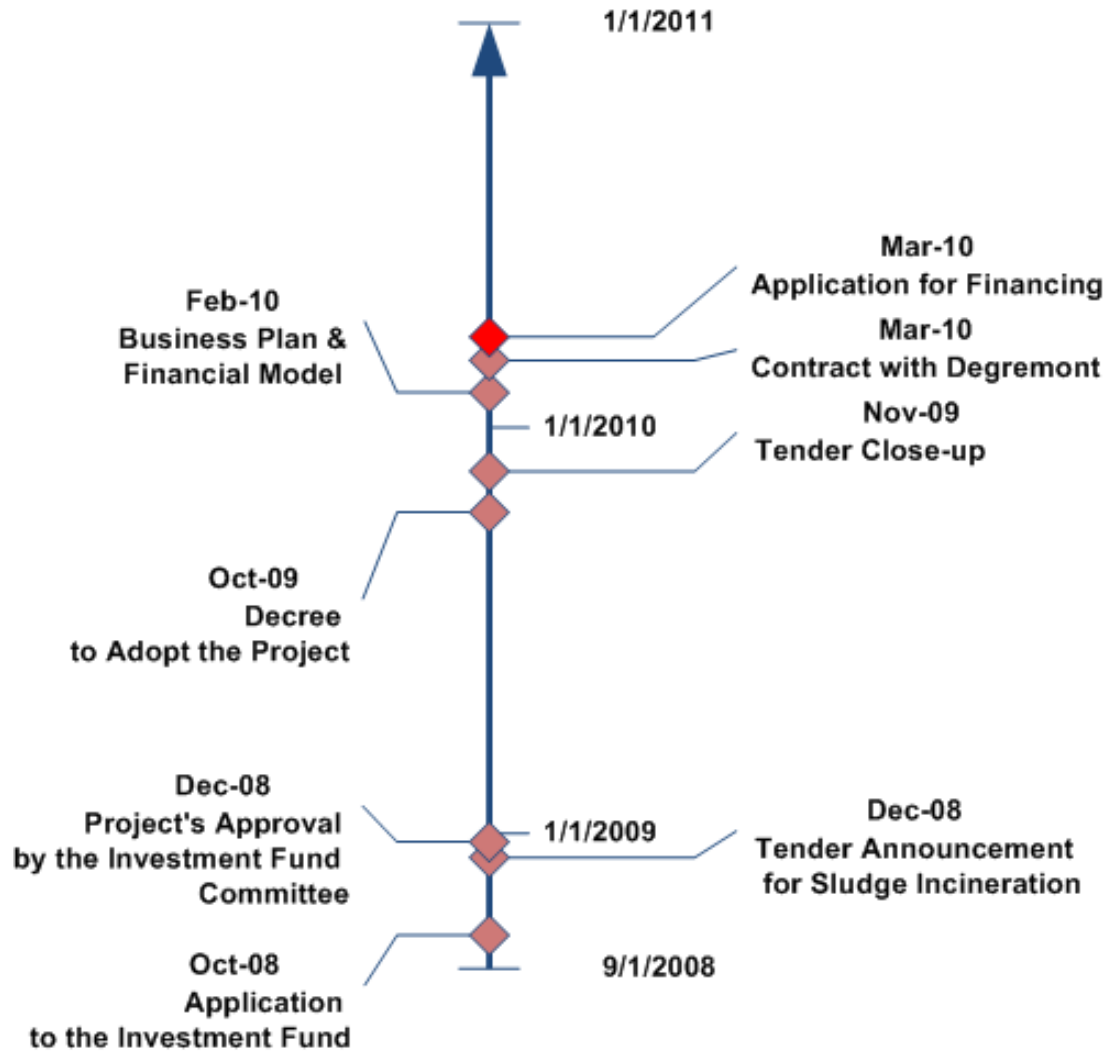
Indicator	Calculation method	Value
Budget efficiency	Discounted cash flow for all budget levels / cash flow from the RF State Investment Fund (target value > 1)	2,67
Federal budget efficiency	Discounted cash flow for federal budget/ cash flow from the RF State Investment Fund (target value > 1)	1,30
Regional budget efficiency	Discounted cash flow for regional and local budgets/ funds from regional and local budgets (target value > 0,0120%)	1,399
Integrated indicator for economic efficiency	Added value / Gross regional product amount, %	0,1108%

ENVIRONMENTAL IMPACT FACTOR	BEFORE PROJECT	AFTER PROJECT	IMPLEMENTATION MEANS
Air emission, tons per year	213,48	-	Sludge drying bed liquidation
Sludge disposal, tons per year	30 640	8 400	Sludge incineration
Pollutants discharge into water body, tons per year	51 068	49 980	Sewage treatment facilities second stage modernization
Dioxins and other organic chlorine compounds discharge into water body	Existing	No	Introduction of ultra-violet waste water disinfection
Residual chlorine concentration after disinfection, mg per liter	1,5 - 1,77	No	Introduction of ultra-violet waste water disinfection



ЕВРАЗИЙСКИЙ

Implementation Status



Thank you for your attention!



ул. Долгоруковская, д. 9,
г. Москва, Россия, 127006
тел.: +7 (495) 780-80-45
факс: +7 (495) 780-80-66

www.evraziyskiy.ru